

I. PARADISE

At the center of the universe of universes is the stationary Isle of Paradise, the geographic center of infinity, and the abiding place of the Universal Father, the Eternal Son, and the Infinite Spirit.

Paradise is the absolute source and the eternal focal point of all energy-matter in the universe of universes. This central Isle is the most gigantic organized body of cosmic reality in all the master universe. Paradise is motionless. It is ellipsoid and essentially flat.



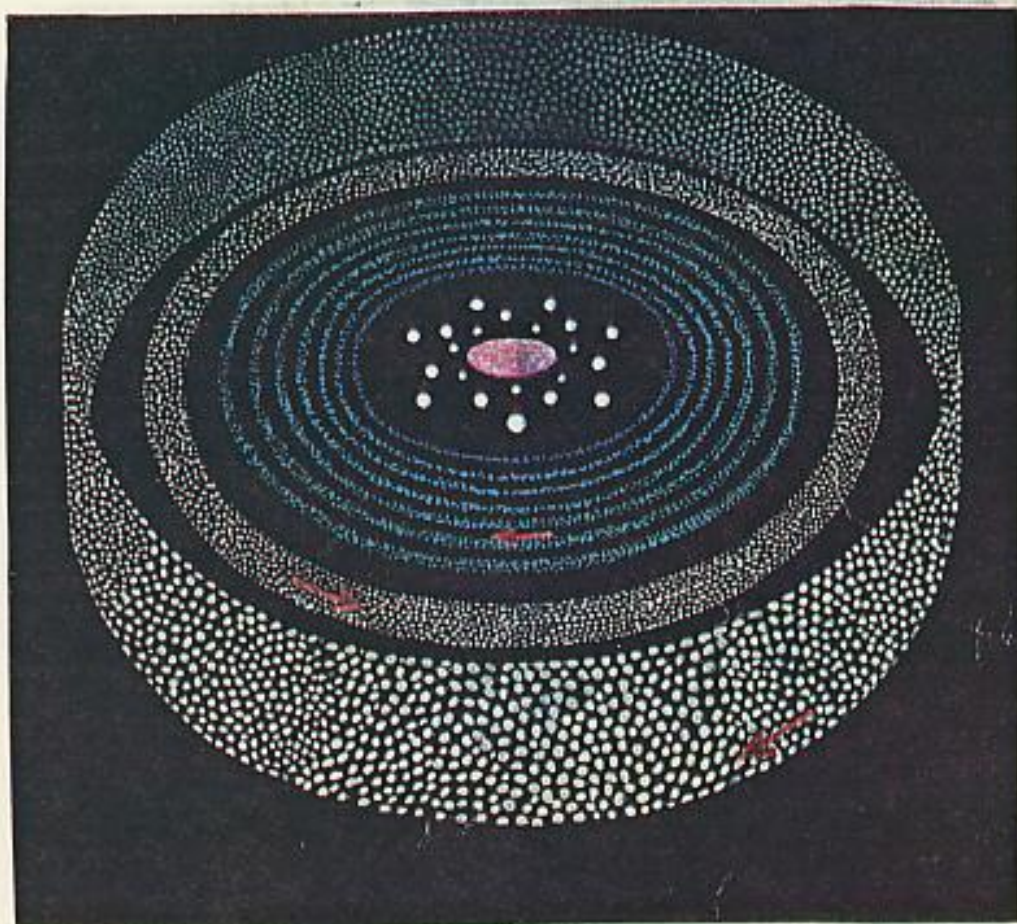
The immensity, material beauty, and spiritual glory of Paradise are beyond the comprehension of the finite mind of man. Since you are beginning to glimpse the enormity of the material universe, it should become evident to you that such a tremendous material universe must have an adequate and worthy capital, a headquarters commensurate with the dignity and infinitude of the universal Ruler of all this vast and far-flung creation of material realms and living beings.

After all, to mortals the most important thing about eternal Paradise is the fact that this perfect abode of the Universal Father is the real and far-distant destiny of the immortal souls of the mortal and material sons of God.

Revolving clockwise about Paradise are three seven-world circuits, the sacred spheres of the Father, the Son, and the Spirit, enormous worlds of unexcelled grandeur and unimagined glory.

2. THE CENTRAL UNIVERSE OF HAVONA

The central universe of Havona revolves clockwise about Paradise and its 21 satellites. It is of enormous dimensions and almost unbelievable mass and consists of one billion perfect worlds of unimagined beauty and superb grandeur. These worlds are arranged in seven concentric circuits represented in blue on the drawing. The circuits are not superimposed; their worlds follow each other in linear procession in one vast plane. Havona is not a time creation; it is an eternal existence. Each Havona world is different—no two are alike.

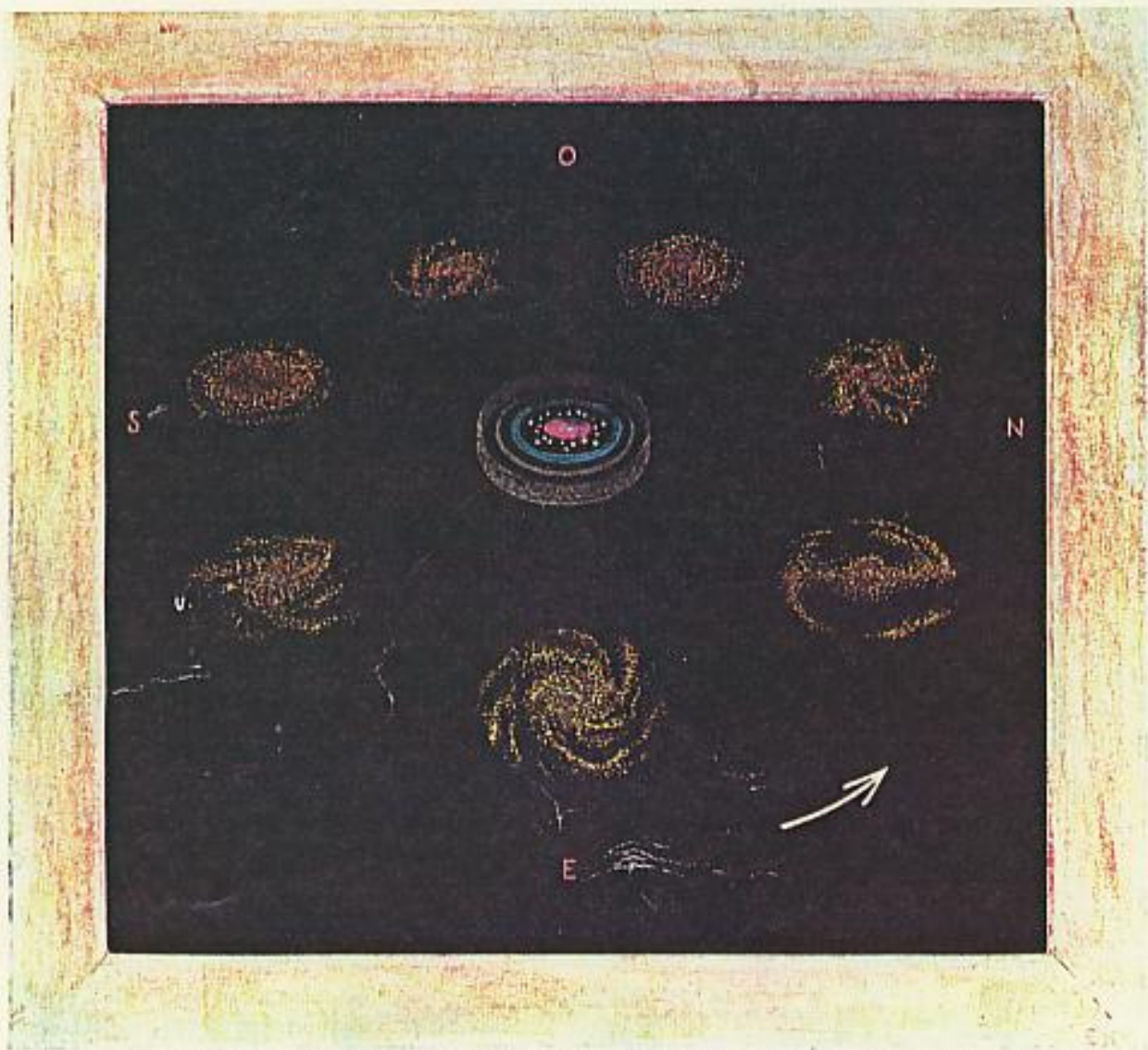


Surviving mortals in their ascension to Paradise, will pass through each of these billion worlds. Continuing astonishment, unending wonder, is the experience of those who traverse these gigantic spheres. Not until you visit the last of the Havona worlds, will the tonic of adventure and the stimulus of curiosity disappear from your career. And then will the urge, the forward impulse of eternity, replace its forerunner, the adventure lure of time.

Out beyond Havona there swirl two elliptical circuits of enormous dark gravity bodies pictured in gray on the drawing. The inner circuit is tubular in arrangement. The outer circuit is arranged perpendicularly, being 10,000 times higher than the inner circuit. These gravity bodies neither reflect nor absorb light; thus they completely enshroud Havona and hide it from view of the nearby superuniverses. They so effectively equalize the lines of Havona gravity as to render the central universe a physically balanced and perfectly stabilized creation.

3. THE GRAND UNIVERSE

The grand universe is the presently organized and inhabited creation. It consists of the perfect central universe of Havona and the seven evolutionary superuniverses revolving about it. The superuniverses are unfinished; new nebulae are constantly being organized. When finished, each superuniverse will contain 100,000 local universes, each of which will contain about 10,000,000 inhabited planets.



Our superuniverse, the seventh, is called Orvonton, which has a diameter of approximately 500,000 light years and contains more than ten trillion suns. Practically all of the starry realms visible to the naked eye belong to the superuniverse of Orvonton. The vast Milky Way starry system represents the central nucleus of Orvonton. This great aggregation of suns, dark islands of space, double stars, globular clusters, star clouds, spiral and other nebulae, together with myriads of individual planets, forms a watchlike, elongated-circular grouping of about one seventh of the inhabited evolutionary universes. When the angle of observation is propitious, gazing through the main body of this realm of maximum density, you are looking toward Paradise.

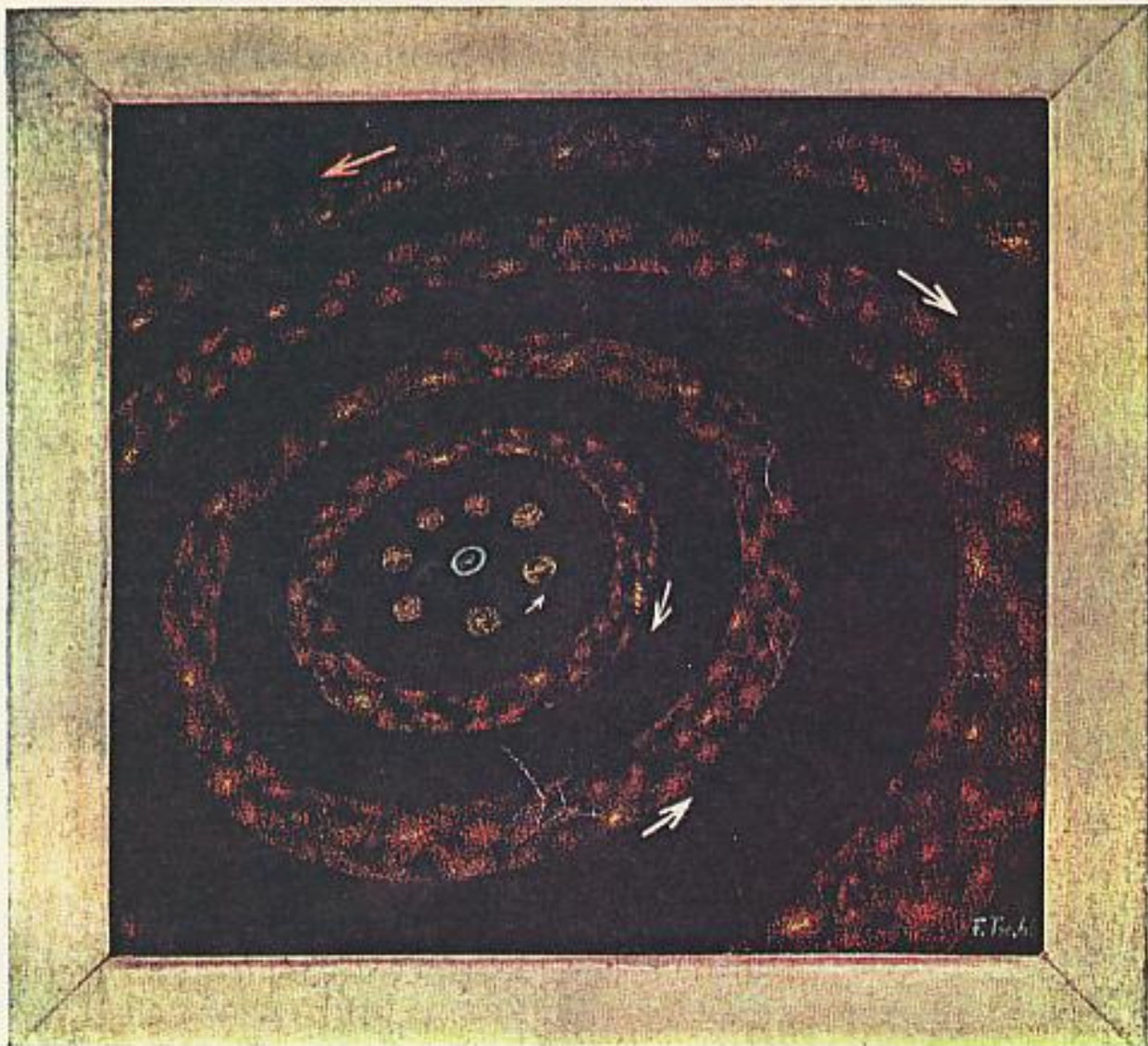
Our local universe, Nebadon, is located near the edge of Orvonton. Our planet, Urantia, belongs to the system of Satania, which is well out towards the borderland of Nebadon. The location of Urantia is indicated on the drawing by a dot and the letter U.

Christ Michael, Jesus of Nazareth, is the Sovereign of our local universe of Nebadon.

4. THE MASTER UNIVERSE

The master universe encompasses all of material creation. This includes the central universe of Havona, the seven superuniverses, and the four uninhabited outer space levels, which revolve alternately clockwise and counterclockwise. The immensity of the far-flung creation of the Universal Father is utterly beyond the grasp of finite imagination.

In outer space millions of new galaxies are in the process of formation. The first outer space level is about 500,000 light years beyond the periphery of the grand universe. Between the



seven superuniverses and the first outer space level and between each of the space levels are enormous elliptical zones of quiescent space activities. They are free from star dust—cosmic fog.

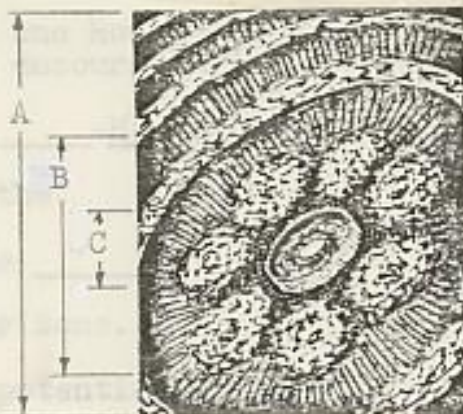
The sizes of the outer space levels are enormous—millions of light years in width. Improved telescopes will reveal to the wondering gaze of our astronomers no less than 375 million new galaxies in outer space. There are already in outer space 70,000 aggregations of matter, each of which is greater than any one of the seven superuniverses—and this is just the beginning of stellar evolution in these regions. We can imagine the immensity of outer space, we can sense its extent and its majestic dimensions, but otherwise we can know little more about these realms.

It is believed that surviving mortals born on the planets of space (like Urantia) in their ascent to Paradise are being trained to take part in the future administration of these outer space levels.

LET'S PLAY 20 QUESTIONS!

Study lesson on the Master Universe and the Mortal Ascension Career
By Charles (Chick) Montgomery, First URANTIA Society of Los Angeles

Work quickly together. Answer all questions.
You have one hour. Discussion is encouraged!



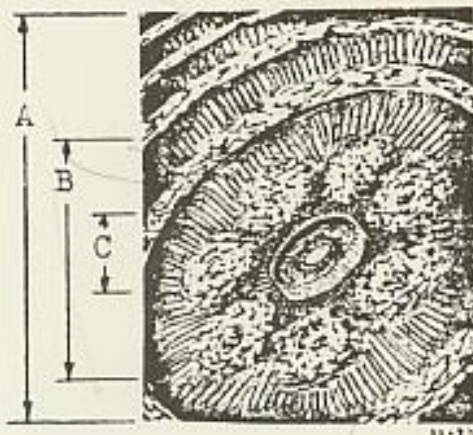
1. A is the M Universe.
 2. B is the _____ Universe.
 3. C is the P-H System.
 4. There are a total of (#) _____ trillion Creator Sons. (p.167)
 5. Each C S is responsible for a potential of (#) _____ million inhabited planets. (p.167)
 - *6. What is the requirement for eternal life? _____
 - *7. Estimate how many living on this planet now will survive: " _____ %.
 8. How can we augment Adjuster leading? (p.1206d) (1209d) _____
 9. We make up any experiential deficiency in parenting on the (#) _____ T World. (xxviiiA and xxviiiB)
 10. The s is the joint creation of the human _____ and the Divine _____. (1218 a&b)
 11. On what Mansion World do we fuse with our TA's? (#) _____ or _____ (538a)
 12. Personality extinction never occurs after _____ with our _____
 13. Name the major capitals we visit in our ascent through Orvonton: (174d)
J _____ E _____ S _____ U _____ U _____ U _____
 14. After visiting the billion worlds of _____ we go to P _____
 15. Paradise is the center of _____ and nucleus of every _____ (p1d) (p467d)
 16. In Paradise, the highest joy is _____ (p.304c)
 17. After finding the F _____ we become F _____
 18. As finaliters we are destined for service on the _____ levels
 19. In diagram above, A is at least (#) _____ times larger than B. (354b)
 20. (Extra credit mind-bender): How does God know there is not some other universe somewhere, and some other God, in some other reality frame somehow inaccessible to Him? (Discuss if time permits.)
- *For these two questions, look up 26a, 37a, 69d, 290d, 447c, 1205d, 1642c and 2095a. (Divide up the work; find and share the appropriate passages.)

Sunday, 3 November 1979

LET'S PLAY 20 QUESTIONS!

Study lesson on the Master Universe and the Mortal Ascension Career
By Charles (Chick) Montgomery, First URANTIA Society of Los Angeles

Work quickly together. Answer all questions.
You have one hour. Discussion is encouraged!



1. A is the Master Universe.
 2. B is the Grand Universe.
 3. C is the Paradise - Havona System.
 4. There are a total of (#) 700,000 ~~100,000~~ Creator Sons. (p.167)
 5. Each Coastal Sea is responsible for a potential of (#) 10 million inhabited planets. (p.167)
 - *6. What is the requirement for eternal life? desire to do will of the Father knowing & desiring God; acceptance of sonship; desire to be God-like
 - *7. Estimate how many living on this planet now will survive: _____ %.
 8. How can we augment Adjuster leading? (p.1206d) (1209d) Responding to Divine leading; highest values; loving & serving fellow men
 9. We make up any experiential deficiency in parenting on the (#) 1st Transition World. (xxviii a and xxvii b)
 10. The soul is the joint creation of the human mind and the Divine Spirit/Adjuster. (1218 a&b)
 11. On what Mansion World do we fuse with our TA's? (#) 5 or 6 (538a)
 12. Personality extinction never occurs after fusion with our Thought Adjuster
 13. Name the major capitals we visit in our ascent through Orvonton: (174d)
J Eusea E dentia Salvington Umicor 3rd U major 5th Urease
 14. After visiting the billion worlds of Havona we go to Paradise
 15. Paradise is the ^{geographical} center of Infinity and nucleus of every ultimation (p.1d) (p.467d)
 16. In Paradise, the highest joy is worship (p.304c)
 17. After finding the Father we become Finaliters
 18. As finaliters we are destined for service on the outer space levels
 19. In diagram above, A is at least (#) 10,000 times larger than B. (354b)
 20. (Extra credit mind-bender): How does God know there is not some other universe somewhere, and some other God, in some other reality frame somehow inaccessible to Him? (Discuss if time permits.)
- *For these two questions, look up 26a, 37a, 69d, 290d, 447c, 1205d, 1642c and 2095a. (Divide up the work; find and share the appropriate passages.)



URANTIA.

URANTIA FOUNDATION

533 DIVERSEY PARKWAY CHICAGO ILLINOIS 60614

December 4, 1978

Mr. Charles Montgomery
Newsletter Committee Chairman
First URANTIA Society of Los Angeles
10320 Samoa Avenue
Tujunga, California - 91042

Dear Chick:

The Trustees have reviewed your mixed graphic and prose work entitled "URANTIA: An Interpretive Study Aid." Thank you for your patience and co-operation in waiting for our response to your request regarding this work.

We are pleased to hereby grant you permission to print and distribute the work "URANTIA: An Interpretive Study Aid" as part of an issue of The First URANTIA Society of Los Angeles newsletter, the "Agondonter." The permission to print and distribute this work is limited to a single issue of the "Agondonter," and the work may not be reprinted or further distributed without our permission.

Also, we thought it appropriate to advise you that "URANTIA: An Interpretive Study Aid" is a derivative work based on The URANTIA Book. Therefore, any copyright held on "URANTIA: An Interpretive Study Aid" would only refer to that material in the work which is original with the work. The only possible original material in the work appears in the final four panels of line five which deal with the life of Jesus. Those four panels could be interpreted as being derived from the New Testament.

Finally, since you created this work in your capacity as editor of the "Agondonter," we suggest that if the work is to be copyrighted it should be done by the First URANTIA Society of Los Angeles rather than yourself. We suggest this because you are formally elected to the post of Newsletter Committee Chairman, and it is your responsibility to prepare material or edit material for the Society's newsletter. Therefore, the creation of this work may be properly considered to be within the scope of your duties and it is a "work made for hire" even though you are not paid for creating it.

Again, thank you for your patience and co-operation. It is much appreciated.

Sincerely,

Martin W. Myers
Vice President

MWM:kfm

cc: Kermit Anderson, President, FUSLA