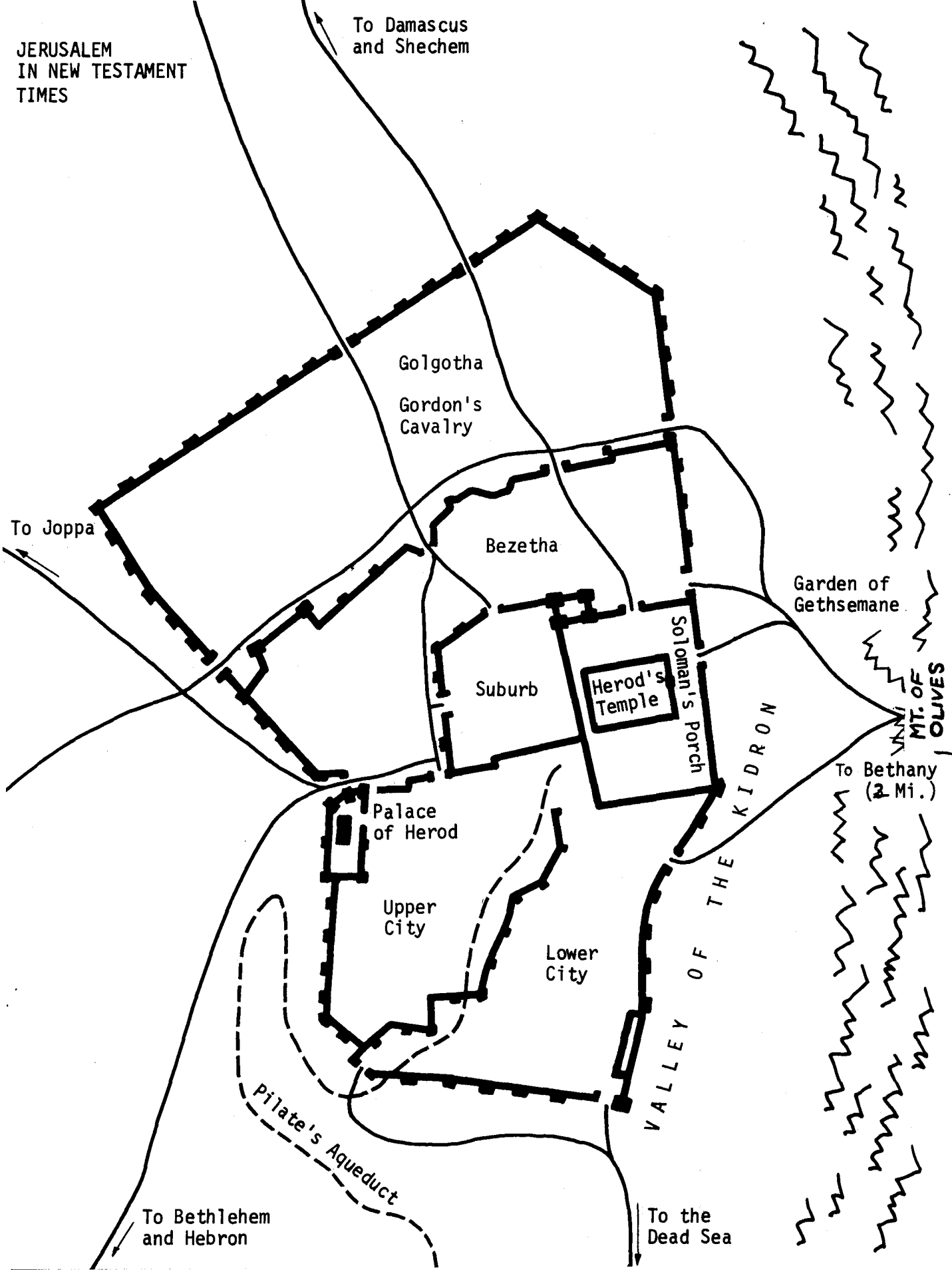


JERUSALEM
IN NEW TESTAMENT
TIMES



PLAN OF HEROD'S TEMPLE AT JERUSALEM

0 10 20 50 100 150 meters
0 50 100 200 300 cubits

North Gate

West Gate

COURT OF THE GENTILES

Golden Gate

WARNING WALL

COURT OF ISRAEL
MEN

WOMEN'S
COURT

Priests' Court

Porch

Beautiful Gate?

Altar of
Burnt Offering

HOLY PLACE

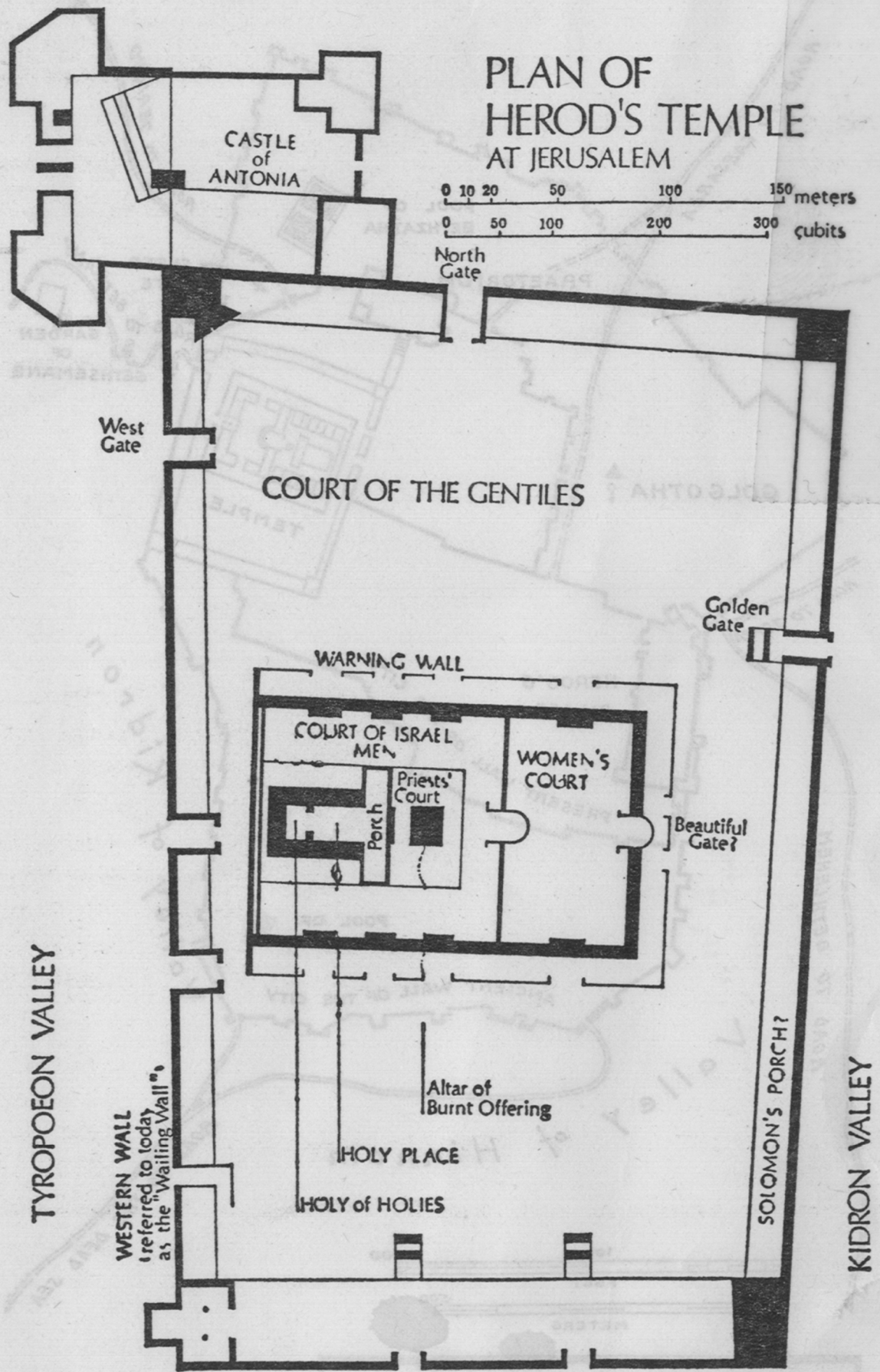
HOLY of HOLIES

WESTERN WALL
(referred to today
as the "Wailing Wall")

SOLOMON'S PORCH?

TYROPOEON VALLEY

KIDRON VALLEY



herodium

HEROD'S WORLD
At its maximum extent
Herod's kingdom took
in most of Palestine,
parts of southern
Syria, and large areas
east of the Jordan
River.

Round eastern tower

*Encircling corridor on
several levels*

*Underground passage
and marble steps
from base of hill to
vaulted entrance
chamber*

*Eastern half of palace
area occupied by garden
enclosed by columns*

