

BODY, MIND, AND SPIRIT:

Evolving Man
and the
Almighty Power of Supremacy

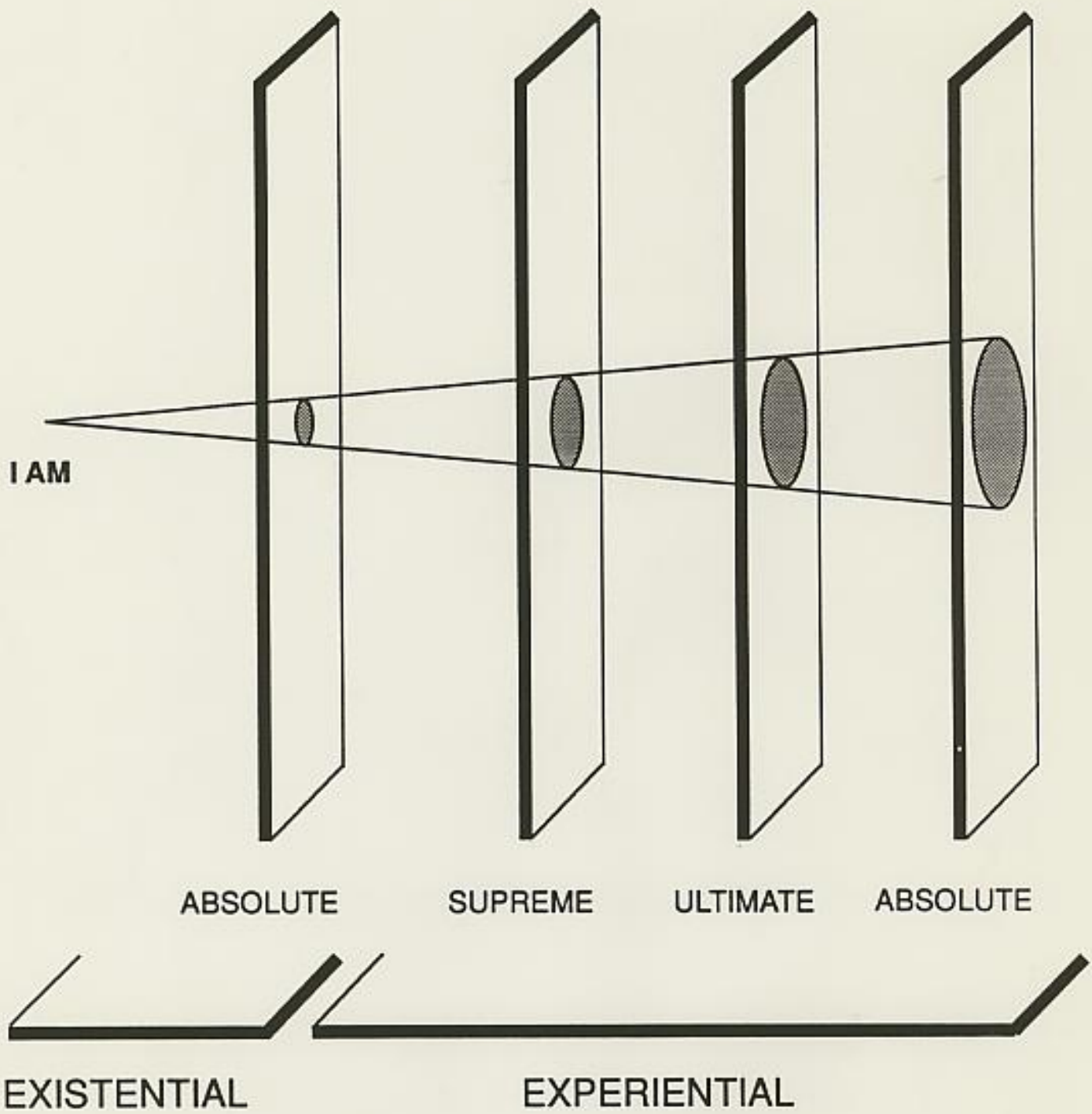
Stuart R. Kerr, III
Summer Seminar
Oklahoma City, OK
July 3, 1994

"THE EXPERIENCE OF EVERY EVOLVING CREATURE PERSONALITY IS A PHASE OF THE EXPERIENCE OF THE ALMIGHTY SUPREME. THE INTELLIGENT SUBJUGATION OF EVERY PHYSICAL SEGMENT OF THE SUPERUNIVERSES IS A PART OF THE GROWING CONTROL OF THE ALMIGHTY SUPREME. THE CREATIVE SYNTHESIS OF POWER AND PERSONALITY IS A PART OF THE CREATIVE URGE OF THE SUPREME MIND AND IS THE VERY ESSENCE OF THE EVOLUTIONARY GROWTH OF UNITY IN THE SUPREME BEING." (UB 1268:7)

Paper-116 Section-7 Para-6

Page-1276 Line-45 Para-8

Man's urge for Paradise perfection, his striving for God-attainment, creates a genuine divinity tension in the living cosmos which can only be resolved by the evolution of an immortal soul; this is what happens in the experience of a single mortal creature. But when all creatures and all Creators in the grand universe likewise strive for God-attainment and divine perfection, there is built up a profound cosmic tension which can only find resolution in the sublime synthesis of almighty power with the spirit person of the evolving God of all creatures, the Supreme Being.



LEVELS OF REALITY

From eternity, God laid the foundations of the heavens and the earth;

"The Universal Father has an eternal purpose pertaining to the material, intellectual, and spiritual phenomena of the universe of universes, which he is executing throughout all time. God created the universes of his own free and sovereign will, and he created them in accordance with his all-wise and eternal purpose." [UB 54:1]

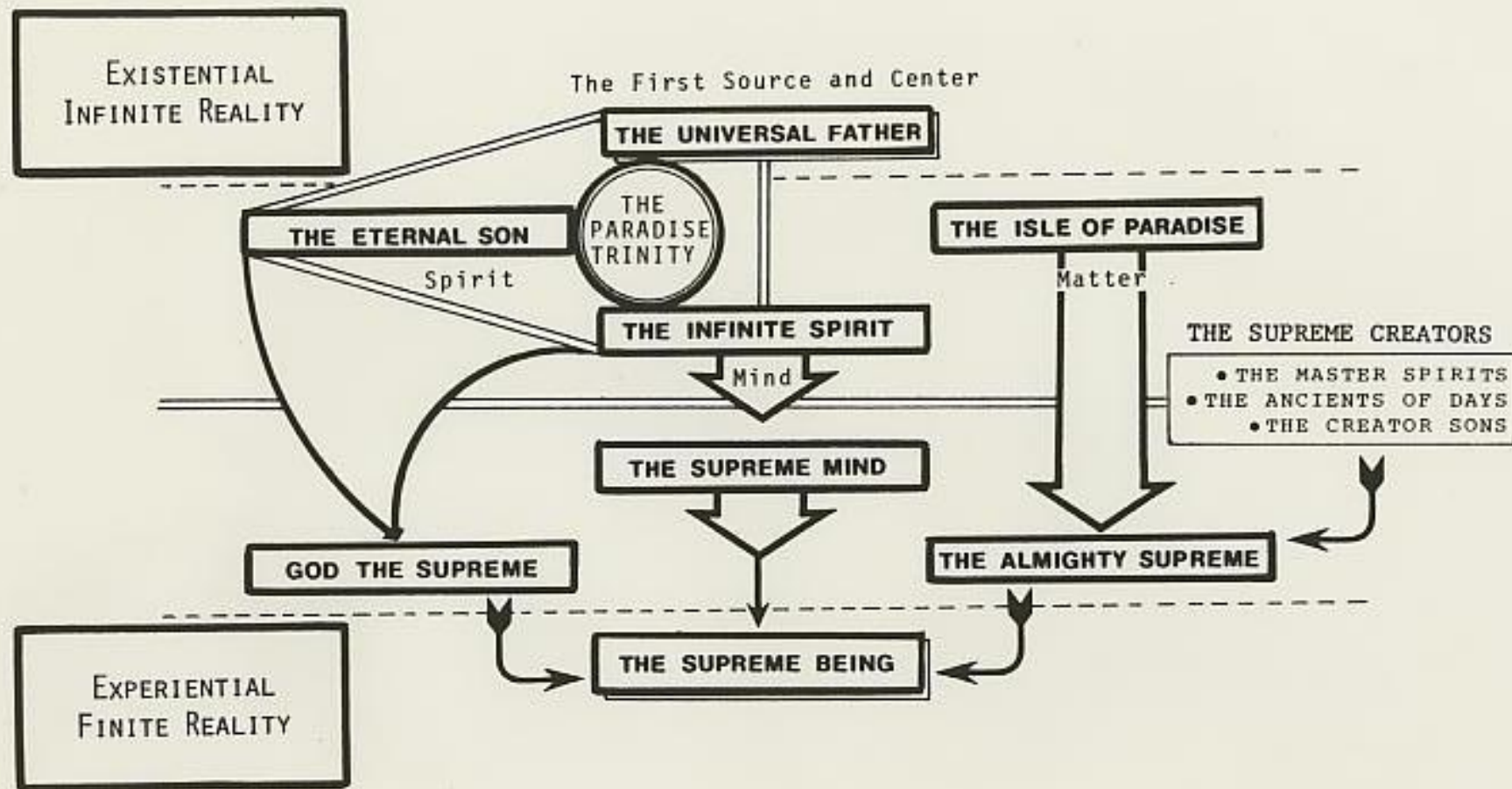
God sets the stage for our creation as a finite reality; it is conditioned by time and space, it has a beginning and it has a foreordained destiny. This creation is experiential - events occur in time-conditioned sequences, and they are constrained within limiting spatial boundaries.

The Finite Level of the Supreme - the time-space evolved unification of four phases of experiential Deity reality - universe power controlled through mind and spirit-unified by the creative presence of personality. This level will power-mind-spirit-personality actualize the Supreme Being as evolutionary-experiential self.

DEITY OF SUPREMACY
GOD THE SUPREME
THE ALMIGHTY SUPREME
THE SUPREME BEING
THE SUPREME
THE SPIRIT PERSON OF SUPREMACY
THE ALMIGHTY POWER OF SUPREMACY
THE SUPREME MIND

"The Supreme Being is the unification of three phases of Deity reality: God the Supreme, the spiritual unification of certain aspects of the Paradise Trinity; the Almighty Supreme, the power unification of the grand universe Creators; and the Supreme Mind, the individual contribution of the Third Source and Center and his co-ordinates to the reality of the Supreme Being." [UB 251:1]

THE EVOLUTION OF THE SUPREME BEING



(3)

"The Supreme Being, now actualizing in the evolutionary universes, is the Deity correlator and synthesizer of time-space divinity, of triune Paradise Deity in experiential association with the Supreme Creators of time and space. When finally actualized, this evolutionary Deity will constitute the eternal fusion of the finite and the infinite--the everlasting and indissoluble union of experiential power and spirit personality." (UB 11:3)

BODY, MIND, AND SPIRIT

Paper-141 Section-4 Para-4

Page-1590 Line-44 Para-8

" The Master taught them much about the whole man--the union of body, mind, and spirit to form the individual man or woman.

Paper-116 Section-6 Para-1

Page-1275 Line-6 Para-1

In the evolutionary superuniverses energy-matter is dominant except in personality, where spirit through the mediation of mind is struggling for the mastery. The goal of the evolutionary universes is the subjugation of energy-matter by mind, the co-ordination of mind with spirit, and all of this by virtue of the creative and unifying presence of personality. Thus, in relation to personality, do physical systems become subordinate; mind systems, co-ordinate; and spirit systems, directive.

Unifying
Personality



- Physical Systems (Subordinate)
- Mind Systems (Co-ordinate)
- Spirit Systems (Super-ordinate - "directive")

Paper-116 Section-5 Para-8

Page-1274 Line-32 Para-5

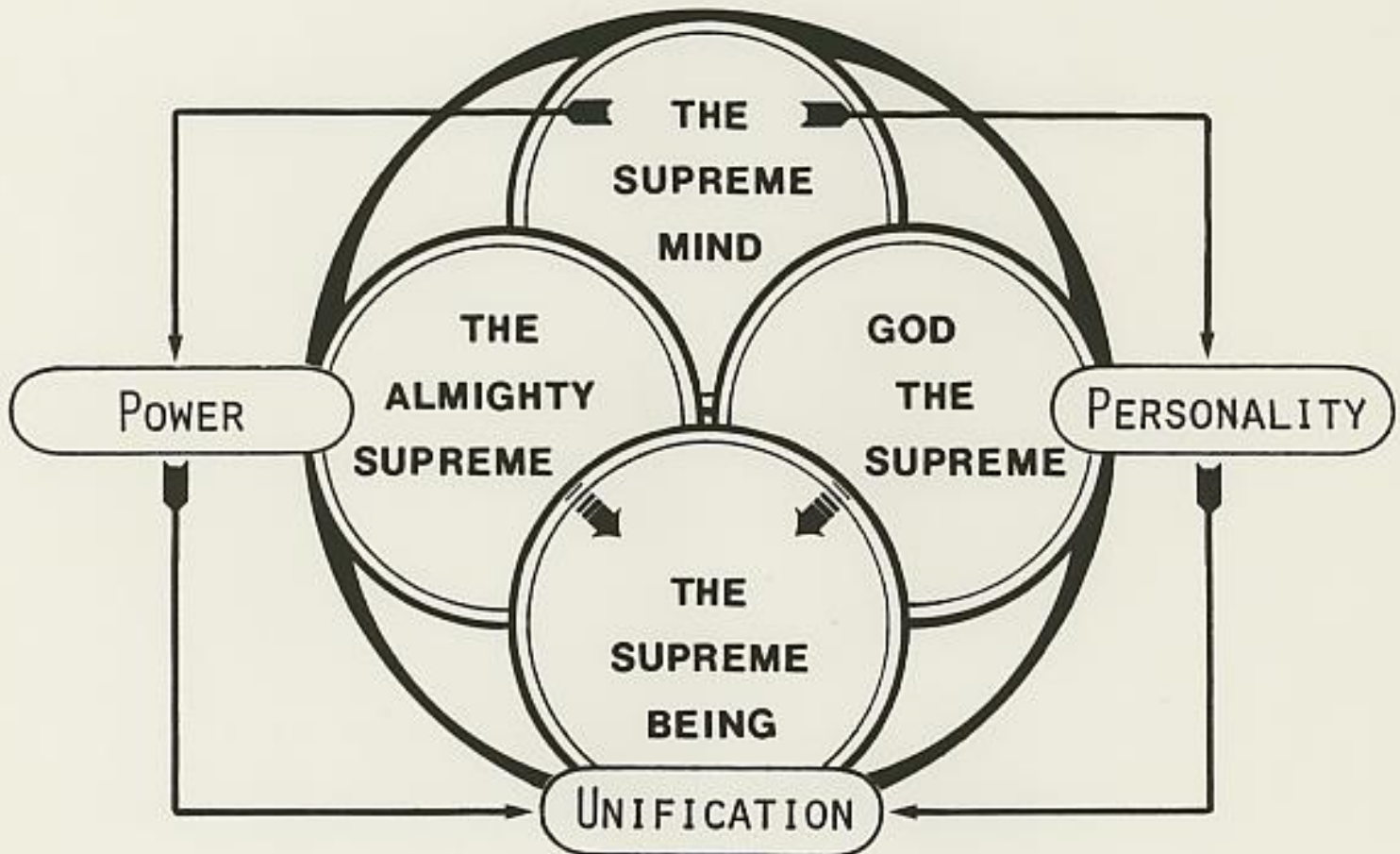
The spirit struggles of time and space have to do with the evolution of spirit dominance over matter by the mediation of (personal) mind; the physical (nonpersonal) evolution of the universes has to do with bringing cosmic energy into harmony with the equilibrium concepts of mind subject to the overcontrol of spirit. The total evolution of the entire grand universe is a matter of the personality unification of the energy-controlling mind with the spirit-co-ordinated intellect and will be revealed in the full appearance of the almighty power of the Supreme.

Paper-56 Section-6 Para-2

Page-641 Line-17 Para-4

The personality realities of the Supreme Being come forth from the Paradise Deities and on the pilot world of the outer Havona circuit unify with the power prerogatives of the Almighty Supreme coming up from the Creator divinities of the grand universe. God the Supreme as a person existed in Havona before the creation of the seven superuniverses, but he functioned only on spiritual levels. The evolution of the Almighty power of Supremacy by diverse divinity synthesis in the evolving universes eventuated in a new power presence of Deity which co-ordinated with the spiritual person of the Supreme in Havona by means of the Supreme Mind, which concomitantly translated from the potential resident in the infinite mind of the Infinite Spirit to the active functional mind of the Supreme Being.

POWER-PERSONALITY SYNTHESIS



"THE EXPERIENCE OF EVERY EVOLVING CREATURE PERSONALITY IS A PHASE OF THE EXPERIENCE OF THE ALMIGHTY SUPREME. THE INTELLIGENT SUBJUGATION OF EVERY PHYSICAL SEGMENT OF THE SUPERUNIVERSES IS A PART OF THE GROWING CONTROL OF THE ALMIGHTY SUPREME. THE CREATIVE SYNTHESIS OF POWER AND PERSONALITY IS A PART OF THE CREATIVE URGE OF THE SUPREME MIND AND IS THE VERY ESSENCE OF THE EVOLUTIONARY GROWTH OF UNITY IN THE SUPREME BEING." (UB 1268:7)

COMPREHENSIBLE DEITY

The Universal Father
The Eternal Son
The Infinite Spirit → First and Foremost ← The Almighty Supreme
Attainable by
Ascending Mortals

God the Supreme
The Supreme Mind

Paper-8 Section-3 Para-8

Page-94 Line-3 Para-1

At the center of all things the Infinite Spirit is the first of the Paradise Deities to be attained by the ascending pilgrims. The Third Person enshrouds the Second and the First Persons and therefore must always be first recognized by all who are candidates for presentation to the Son and his Father.

Paper-8 Section-6 Para-2

Page-96 Line-21 Para-5

The Infinite Spirit is a complete and perfect personality, the divine equal and co-ordinate of the Universal Father and the Eternal Son. The Conjoint Creator is just as real and visible to the higher intelligences of the universes as are the Father and the Son; indeed more so, for it is the Spirit whom all ascenders must attain before they may approach the Father through the Son.

Paper-9 Section-5 Para-4

Page-103 Line-12 Para-2

Since the Third Person of Deity is the source of mind, it is quite natural that the evolutionary will creatures find it easier to form comprehensible concepts of the Infinite Spirit than they do of either the Eternal Son or the Universal Father.

Paper-56 Section-6 Para-4

Page-641 Line-37 Para-6

While ascending mortals achieve power comprehension of the Almighty on the capitals of the superuniverses and personality comprehension of the Supreme on the outer circuits of Havona, they do not actually find the Supreme Being as they are destined to find the Paradise Deities. Even the finaliters, sixth-stage spirits, have not found the Supreme Being, nor are they likely to until they have achieved seventh-stage-spirit status, and until the Supreme has become actually functional in the activities of the future outer universes.

ORGANISM AND MECHANISM

Paper-118 Section-8 Para-2 Page-1301 Line-36 Para-8

Mortal man is a machine, a living mechanism; his roots are truly in the physical world of energy. Many human reactions are mechanical in nature; much of life is machinelike. But man, a mechanism, is much more than a machine; he is mind endowed and spirit indwelt; and though he can never throughout his material life escape the chemical and electrical mechanics of his existence, he can increasingly learn how to subordinate this physical-life machine to the directive wisdom of experience by the process of consecrating the human mind to the execution of the spiritual urges of the indwelling Thought Adjuster.

Paper-118 Section-9 Para-4 Page-1303 Line-26 Para-6

The grand universe is mechanism as well as organism, mechanical and living-- a living mechanism activated by a Supreme Mind, co-ordinating with a Supreme Spirit, and finding expression on maximum levels of power and personality unification as the Supreme Being.

Paper-116 Section-0 Para-4 Page-1268 Line-20 Para-4

The Almighty Supreme is a living and evolving Deity of power and personality. His present domain, the grand universe, is also a growing realm of power and personality. His destiny is perfection, but his present experience encompasses the elements of growth and incomplete status.

Paper-116 Section-7 Para-1 Page-1276 Line-16 Para-3

The grand universe is not only a material creation of physical grandeur, spirit sublimity, and intellectual magnitude, it is also a magnificent and responsive living organism. There is actual life pulsating throughout the mechanism of the vast creation of the vibrant cosmos. The physical reality of the universes is symbolic of the perceivable reality of the Almighty Supreme; and this material and living organism is penetrated by intelligence circuits, even as the human body is traversed by a network of neural sensation paths. This physical universe is permeated by energy lanes which effectively activate material creation, even as the human body is nourished and energized by the circulatory distribution of the assimilable energy products of nourishment. The vast universe is not without those co-ordinating centers of magnificent overcontrol which might be compared to the delicate chemical-control system of the human mechanism.

THE MORTAL CREATURE

THE SUPREME BEING

The Divine Presence of the Paradise Father

The Absolute Foundation of Original Deity

THOUGHT ADJUSTER

PARADISE TRINITY

Personality Decisions of the Human Mind

Divinity Successes of the Supreme Creators

MORONTAL SOUL
• Volitional Co-Creative Partner

GOD THE SUPREME
• Volitional Creative Participant

Immortalization

Deity Actualization

ETERNALITER NATURE

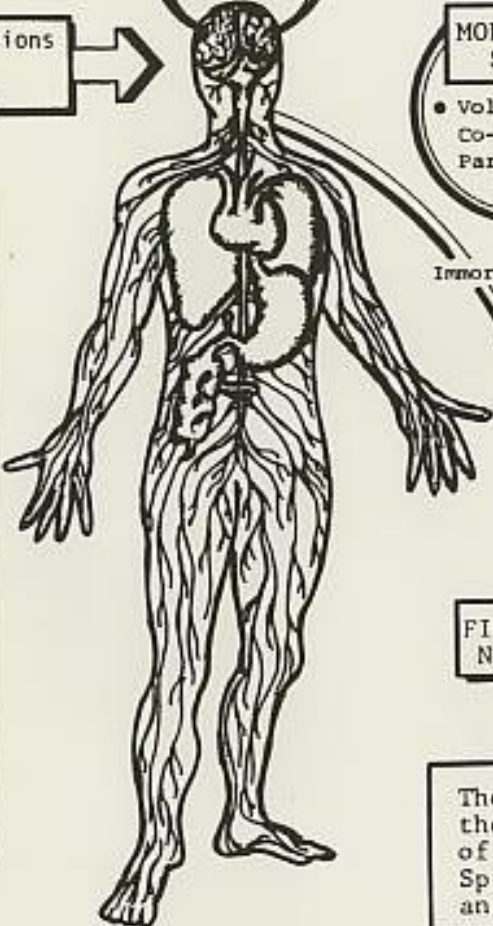
FINALITER NATURE

DEITY NATURE

The Perfecting Nature - the Creative Unification of Being as Driven by Spirit, through Mind, and over Matter

- (1) The Network of Neural Sensation Paths
- (2) The Delicate Chemical-Control System of the Human Mechanism
- (3) The Circulatory Distribution of Assimilable Energy Products of Nourishment

- (1) Intelligence Circuits
- (2) Co-ordinating Centers of Magnificent Overcontrol
- (3) Energy Lanes Activating the Material Creation



The mind struggle for spirit self-realization, the co-ordination of the ascendant mortal-nature with the divine Adjuster-nature within the limits of finite possibilities

The spirit of the emerging personality of the Supreme Being, striving for mastery of energy-matter within the totality of the finite creations of time and space via Supreme Mind

UNITY OF BEING

THAT WHICH GOD SEPARATES FROM HIS ABSOLUTE UNITY
BY THE DIVINE EXERCISING OF HIS DEITY CREATOR
PREROGATIVES, HE RE-UNIFIES AT THE DEITY LEVEL
OF SUPREMACY (IN TIME AND SPACE) AS THE
ACTUALIZED SUPREME BEING.

Paper-56 Section-3 Para-1

Page-639 Line-2 Para-1

The Universal Father is one, but to time-space he is revealed in the dual phenomena of pure energy and pure spirit.

Paper-116 Section-6 Para-7

Page-1275 Line-45 Para-7

On Paradise, monota and spirit are as one--indistinguishable except by name.

Paper-106 Section-5 Para-2

Page-1167 Line-21 Para-4

The spirit-personal qualities of the Supreme are inseparable from the power prerogatives of the Almighty, and both are complemented by the unknown potential of Supreme mind.

Paper-116 Section-6 Para-4

Page-1275 Line-22 Para-4

And that spirit itself in volitional personality can strive through mind for the mastery of energy-matter discloses the potential unity of all finite creation.

Paper-0 Section-8 Para-3

Page-12 Line-5 Para-1

God the Supreme is potential in the Paradise Trinity, from whom he derives his personality and spirit attributes; but he is now actualizing in the Creator Sons, Ancients of Days, and the Master Spirits, from whom he derives his power as Almighty to the superuniverses of time and space. This power manifestation of the immediate God of evolutionary creatures actually time-space evolves concomitantly with them. The Almighty Supreme, evolving on the value-level of nonpersonal activities, and the spirit person of God the Supreme are one reality--the Supreme Being.

GOD THE SEVENFOLD, CREATURE-CREATOR SYNTHESIS

- GOD THE SEVENFOLD IS A CREATIVE-ASSOCIATIVE EXPANSION OF THE PARADISE DEITIES INTO TIME AND SPACE.
- GOD THE SEVENFOLD IS THE LIVING LADDER OF DIVINE PERSONALITIES THAT BRIDGES THE GAP BETWEEN THE MORTAL CREATURE AND THE PARADISE FATHER.

THE EVOLVING SUPREME BEING:

- * His evolution is consummated by the completed co-operation of the Supreme Creators,
 - The Seven Master Spirits
 - The Ancients of Days
 - The Paradise Creator Sonsand the three Paradise Deities,
 - The Paradise Father
 - The Eternal Son
 - The Infinite Spirit
- * He is at the mid-point of God the Sevenfold

Paper-105 Section-6 Para-1

Page-1159 Line-2 Para-1

The divinity response to the imperfection inherent in the time lag of evolution is disclosed in the compensating presence of God the Sevenfold, by whose activities that which is perfecting is integrated with both the perfect and the perfected. This time lag is inseparable from evolution, which is creativity in time. Because of it, as well as for other reasons, the almighty power of the Supreme is predicated on the divinity successes of God the Sevenfold. This time lag makes possible creature participation in divine creation by permitting creature personalities to become partners with Deity in the attainment of maximum development.

Paper-116 Section-4 Para-12

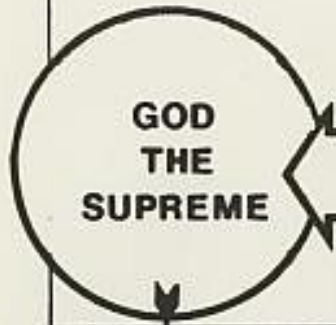
Page-1273 Line-23 Para-4

Mortal man appears to be necessary to the full function of God the Sevenfold as this divinity grouping culminates in the actualizing Supreme. There are many other orders of universe personalities who are equally necessary to the evolution of the almighty power of the Supreme, but this portrayal is presented for the edification of human beings, hence is largely limited to those factors operating in the evolution of God the Sevenfold which are related to mortal man.

THE ISLE OF PARADISE



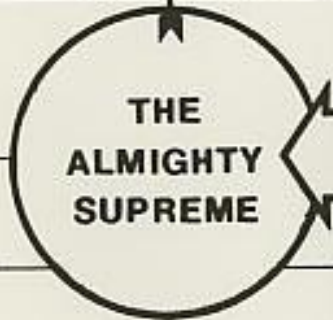
HAVONA



GOD THE FATHER
GOD THE SON
GOD THE SPIRIT

THE
PARADISE
TRINITY

THE SUPREME BEING



THE SEVEN MASTER SPIRITS
THE ANCIENTS OF DAYS
THE PARADISE CREATOR SONS

THE SUPREME
CREATOR
PERSONALITIES

THE LOCAL UNIVERSE

THE SUPERUNIVERSE

THE GRAND UNIVERSE



URANTIA

THE SEVEN-RUNG
LADDER OF GOD
THE SEVENFOLD

(11)

Paper-34 Section-6 Para-3

Page-380 Line-24 Para-5

From the heights of eternal glory the divine Spirit descends, by a long series of steps, to meet you as you are and where you are and then, in the partnership of faith, lovingly to embrace the soul of mortal origin and to embark on the sure and certain retracement of those steps of condescension, never stopping until the evolutionary soul is safely exalted to the very heights of bliss from which the divine Spirit originally sallied forth on this mission of mercy and ministry.

Paper-117 Section-1 Para-2

Page-1278 Line-34 Para-7

In the persons of the Supreme Creators the Gods have descended from Paradise to the domains of time and space, there to create and to evolve creatures with Paradise-attainment capacity who can ascend thereto in quest of the Father. This universe procession of descending God-revealing Creators and ascending God-seeking creatures is revelatory of the Deity evolution of the Supreme, in whom both descenders and ascenders achieve mutuality of understanding, the discovery of eternal and universal brotherhood. The Supreme Being thus becomes the finite synthesis of the experience of the perfect-Creator cause and the perfecting-creature response.

Paper-116 Section-3 Para-2

Page-1271 Line-29 Para-1

The creature bestowals of the Paradise orders of sonship enable these divine Sons to enrich their personalities by the acquisition of the actual nature of universe creatures, while such bestowals unfailingly reveal to the creatures themselves the Paradise path of divinity attainment. The Adjuster bestowals of the Universal Father enable him to draw the personalities of the volitional will creatures to himself.

Paper-116 Section-3 Para-3

Page-1271 Line-29 Para-2

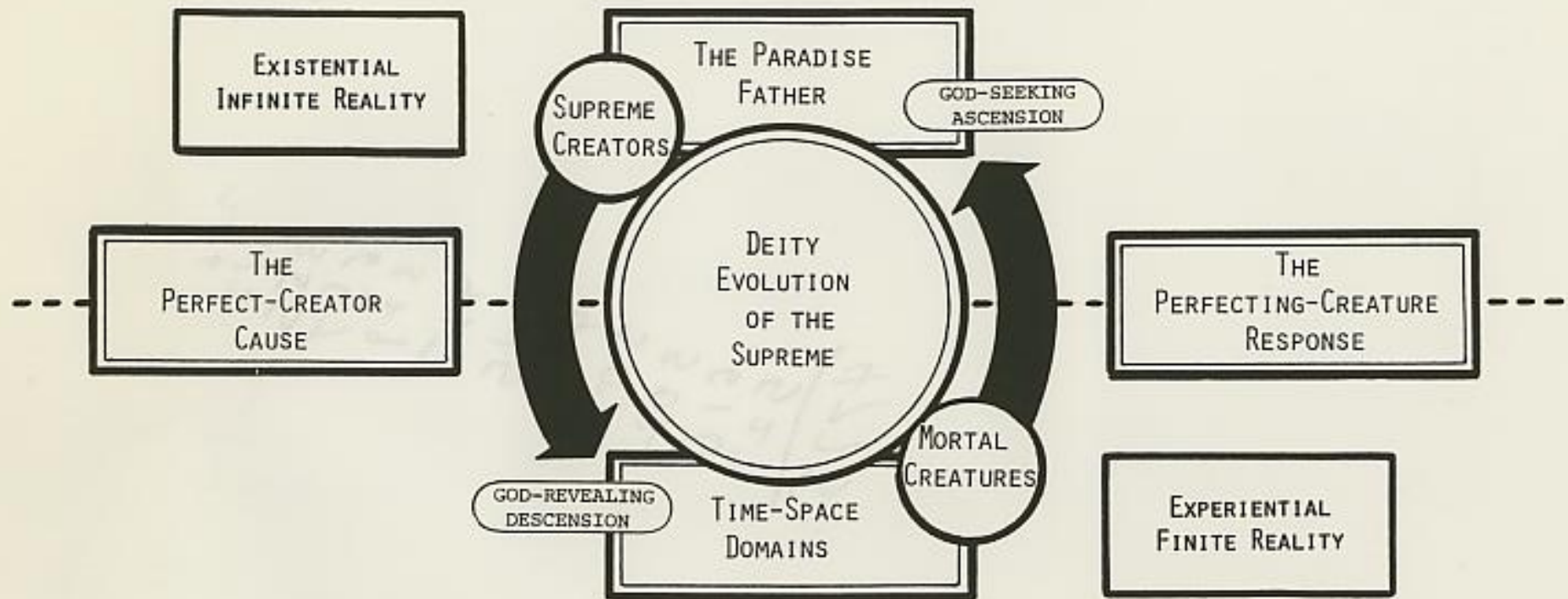
When divinity becomes like humanity, inherent in this relationship is the possibility that humanity can become divine.

Paper-117 Section-6 Para-24

Page-1291 Line-14 Para-4

But no God-knowing mortal can ever be lonely in his journey through the cosmos, for he knows that the Father walks beside him each step of the way, while the very way that he is traversing is the presence of the Supreme.

CREATURE-CREATOR SYNTHESIS



(13)

"IN THE PERSONS OF THE SUPREME CREATORS THE GODS HAVE DESCENDED FROM PARADISE TO THE DOMAINS OF TIME AND SPACE, THERE TO CREATE AND TO EVOLVE CREATURES WITH PARADISE-ATTAINMENT CAPACITY WHO CAN ASCEND THERETO IN QUEST OF THE FATHER. THIS UNIVERSE PROCESSION OF DESCENDING GOD-REVEALING CREATORS AND ASCENDING GOD-SEEKING CREATURES IS REVELATORY OF THE DEITY EVOLUTION OF THE SUPREME, IN WHOM BOTH DESCENDERS AND ASCENDERS ACHIEVE MUTUALITY OF UNDERSTANDING, THE DISCOVERY OF ETERNAL AND UNIVERSAL BROTHERHOOD. THE SUPREME BEING THUS BECOMES THE FINITE SYNTHESIS OF THE EXPERIENCE OF THE PERFECT-CREATOR CAUSE AND THE PERFECTING-CREATURE RESPONSE." (UB 1278:7)